



## Arlington Park Mansions, London, W4 4HE

A delightful two bedroomed mansion apartment situated in the heart of Chiswick just moments from the main high road with its array of boutique shops and numerous restaurants local retailers include M&S, Waitrose, Sainsbury's, and Tesco. The accommodation provides reception Room, fitted kitchen with breakfast bar, two double bedrooms, shower room with walk-in shower, gas fired central heating panoramic views from the 3rd floor. Local transport links include chiswick park tube station, numerous bus routes with vehicular access via A4/M4 central London, Heathrow & The West the property is offered furnished and available 19th February. Hounslow Council Band D - EPC D

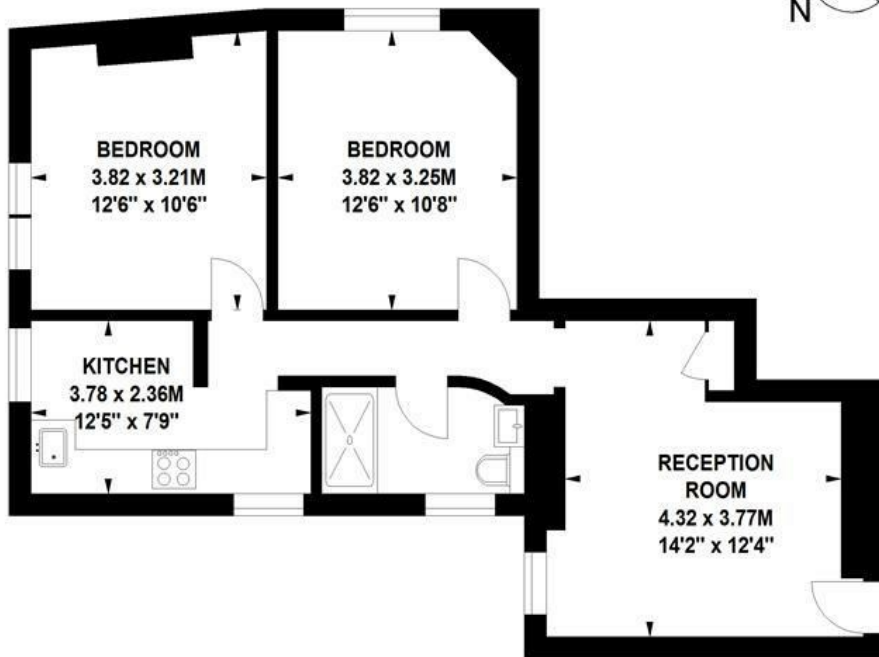
- Lovely central location
- Period mansion apartment
- Great for transport links
- Very nicely presented
- Reception room
- Kitchen with breakfast bar
- Two double bedrooms
- Luxury shower room
- Offered furnished
- Available 19th February

**£2,100 Per Calendar Month**

# Arlington Park Mansions, Sutton Lane North, W4

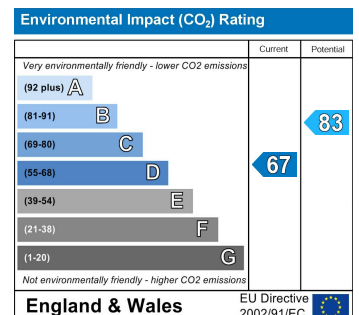
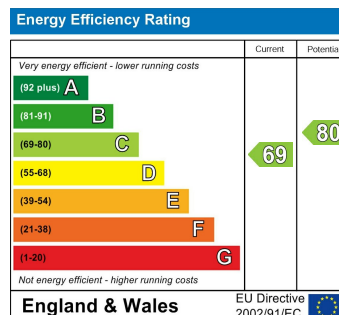
Approximate gross internal area

57.60 sq m / 620 sq ft



## Third Floor

Not to scale, for guidance only and must not be relied upon as a statement of fact.  
All measurements and areas are approximate only



5-7 Turnham Green Terrace, Chiswick, London, W4 1RG

Tel 020 8747 8800

E-mail [lettings@whitmanandco.com](mailto:lettings@whitmanandco.com)

Website [www.whitmanandco.com](http://www.whitmanandco.com)

[PrimeLocation.com](http://PrimeLocation.com)

[Zoopla.co.uk](http://Zoopla.co.uk)

[rightmove](http://rightmove)

[OnTheMarket.com](http://OnTheMarket.com)

MISREPRESENTATION ACT 1967

Whitman & Co. for themselves and for the vendors give notice that these particulars do not constitute any part of, an offer of contract. All statements contained in these particulars are made without responsibility on the part of Whitman & Co. or the vendor. None of the statements contained in these particulars is to be relied upon as statements or representations of facts. Any intending purchaser must satisfy himself by inspection or otherwise as to the correctness of each of the statements contained in these particulars. The vendor does not make or give, and neither Whitman & Co. or any person in their employment has any authority to make or give, any representation or warranty whatever in relation to the property.